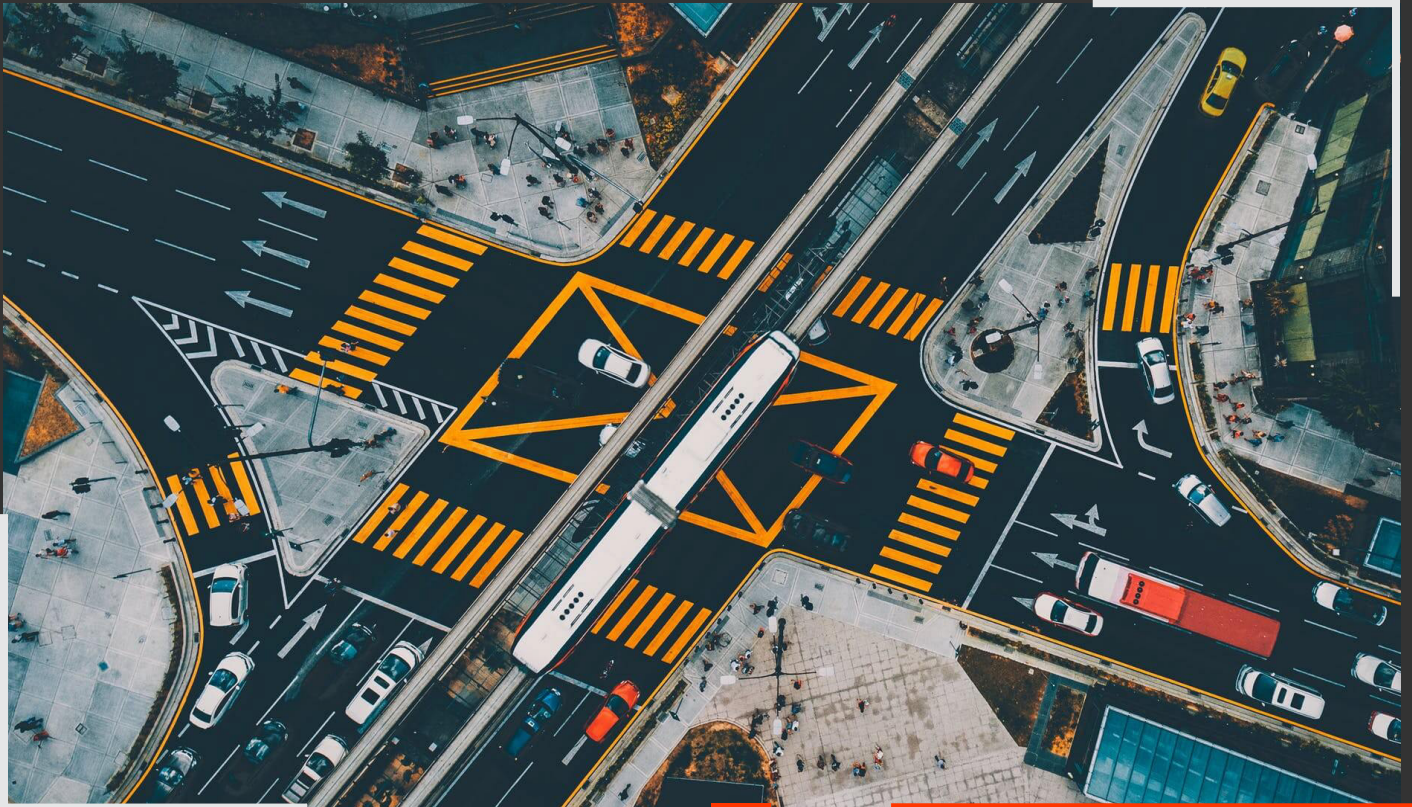


COMPANY PROFILE



About Us...



Rudra Techno Care was emerged to make a difference through wide range of digital services and software services under one roof. Rudra Techno Care is a hub of various types of web designers, web developers, software developers, mobile applications and training resources. Clients are extension of our family, achieving their expectation is our basic responsibility customer satisfaction is our basic revenue. Our software services allow you to make your business more efficient and fast with quality products with new ideas and technologies. We would like to echo the thoughts of Mahatma Gandhi, he said:

"A customer is the most important visitor on our premises; he is not dependent on us, we are dependent on him. He is not an interruption of our work; he is the purpose of it. We are not doing him a favour by serving him; he is doing us a favour by giving us the opportunity to do so."





OUR COMPANY SOLUTIONS

Our Company Solutions...

WINDOW APPLICATION BASED SOLUTIONS

- TOLL MANAGEMENT SYSTEM
- PARKING MANAGEMENT SYSTEM
- HIGHWAYS TRAFFIC MANAGEMENT SYSTEM
- VISITOR MANAGEMENT SYSTEM
- VEHICLE TRACKING SYSTEM

WEB BASED SOLUTIONS

- HR MANAGEMENT SYSTEM
- PAYROLL MANAGEMENT SYSTEM

HARDWARE SOLUTIONS

- AUTOMATIC BOOM BARRIER
- RFID READER
- CCTV CAMERA
- SOLAR LED
- SOLAR BLINKERS
- SOLAR ROOFTOP
- SOLAR ROAD STUDS
- TOLL WEIGHING SYSTEMS

Toll Management System



TMS (Toll Management System) multi module based application with hardware integration. Toll Management System is an enterprise level software application used in highway toll plaza's to maintain huge amount of cash transactions, non-cash transactions, Exempt vehicle transactions, violation transactions and convoy vehicle transactions with high securities and data management process. Toll Management System is multi-layer architecture based software product with multi module applications. Multi module like "Admin Module", "Audit Module", "POS Module", "Lane Module". Admin Module is again divided into four sub modules like "HR Management", "Lane Management", "Cash-Up Management" and "Report Management". All these modules and sub- modules are connected or inter related with each other's with single or multi databases.

▪ AUTOMATIC VEHICLE CLASSIFICATION SYSTEM

AVC is a key element for assessment of the correct toll fee at toll plazas and ensures accurate vehicle detection and classification, offering outstanding performance. AVC is based on infrared sensor technology for low maintenance classification

AVC is flexible in design and supports changing classification schemes. The classification is based on axles, distance between axles, single and double wheels and multiple vehicle heights. AVC is comprised of a controller unit, sensors and high-class software. A specific interface to the toll lane controller enables the exchange of vehicle related transaction and passage data which is the base of consistent and verifiable transactions.

▪ ELECTRONIC TOLL COLLECTION SYSTEM

It's a RFID based technology where RFID reader detect RFID tag called FAS Tag which is placed on windscreen of vehicle for making toll payment directly from prepaid account of vehicle owner. It helps cashless payment, fast queue management, time saving, safe & secured. Electronic Toll Collection System offered by Rudra Techno Care is based on NHA and govt. rules with sharp cutting edge new technology and high quality and compatibility devices.

Parking Management System



Parking is a one of the major problem in most of the cities of all over India. Numbers of vehicles are continuously increasing in every city and parking facility or address is not able to park vehicles in parallel way. Our smart parking management system is providing you best parking experience with integrated electronic equipment's and sufficient parking spaces. Our parking solutions belongs to

- **Open place parking solution.**
- **Close place parking solution.**
- **On street place parking solution.**

▪ CAMERA SECURITY PARKING

CCTV surveillance based on modern and digital technology. Remotely accessible from anywhere via network channels with lots of key features like water proof , HD video recording , Night Vision , Wireless connectivity, Motion detection etc.

▪ AUTOMATIC BARRIER PARKING SYSTEM

Automatic barrier system use in an entry and exit point of parking area linked with electromagnetic and PLC circuit cards for making operation smooth and quickly. Easy to operate and maintain can use multiple length boom arms as per requirement. User can use manually on power failure scenario.

▪ SENSOR BASED IDENTIFICATION SYSTEM

Ultra sonic sensor's based technology to detect vehicle on parking slot. Sensor based alarm system to find or detect any unnecessary activity and accident in parking area. Its helps a lot to make parking system as a smart parking system.

Highways Traffic Management System



HTMS is a solution for managing and maintaining highway traffic issues. It's a solution of integrated circuits and high quality electronic devices Which are taking inputs and collecting information from these highway installed devices and equipment's and our solution will calculate, analyse at control centre and ensure proper highway traffic flow and respond quickly for any unwanted and interrupted situation with integrated devices like VMS, ECB , CCTV and etc.

Our main objectives are as follow.

- **VMS**
- **CCTV**
- **ATCC**
- **Control centre**

▪ **VARIABLE MESSAGE SIGN (VMS)**

Message signs are used in highway to inform a vehicle driver about speed limit, sharp turns, traffic status, weather condition, road construction and road block .This helps driver to control vehicle speed.

▪ **AUTOMATIC TRAFFIC COUNTER & CLASSIFIER (ATCC)**

It's a traffic data collection system. It detects, classify and count highway traffic and in regular time period send data to data collection centre. It's also connected or interfaced with VMS, CCTV camera, Video walls & many digital and electronic devices.

▪ **CLOSED CIRCUIT TELEVISION (CCTV)**

CCTV use for traffic and traffic incidence surveillance. Can use recordings for future study about traffic pattern, moving violation and exclusively popular for video surveillance. Live & recorded video footage can be access via Wi-Fi & other network channel.

▪ **CONTROL CENTRE**

High tech control room with quality devices and tools for monitoring and control related devices from one area via wired or wireless connectivity.

Visitor Management System



Easy & secure way to manage your visitors and also welcomes your guests with our reliable and user friendly visitor management system. It improves security by identifying who is in check in, efficiently and quickly in emergency situation.

- **AADHAAR LINKED**

It's a key feature of our VMS software can fetch all records from AADHAAR when visitor will scan fingerprint for check in purpose.

- **CAMERA SECURITY & IMAGE PROCESSING**

Capture visitor and visitor vehicle and other belongings of visitor for security purpose and also can fetch related images and data on one click for auditing and to check in emergency situation.

- **BIOMETRIC FUNCTIONALITY**

Fingerprint impression uses for check in & check out process.

Vehicle Tracking System



A vehicle tracking system combines the use of automatic vehicle location in individual vehicles with software that collects these fleet data for a comprehensive picture of vehicle locations. Modern vehicle tracking systems commonly use GPS or GLONASS technology for locating the vehicle, but other types of automatic vehicle location technology can also be used. Vehicle information can be viewed on electronic maps via the Internet or specialized software. Our RTC Server resides on T3 data centre with **24x7** service support and **99.9%** SLA. Our team loads the software instance for your company. You will get ready to go GPS tracking server in less than 72 hours, no technical skills needed. Monthly/Annual subscription charges are prepaid online using net banking or e-wallet.

Our vehicle tracking software is designed to communicate with a wide variety of GPS devices, so you have the flexibility to use any hardware you choose.

We offer software which gives absolute freedom, no restrictions or obligations. Powerful and easy to use RTC tracking system, written with C# and Java-script. Software architecture gives limitless development opportunities, the code is well commented and it is a breeze to work with. Subscribe to our RTC tracking software, connect as many devices (vehicles) as you need, modify, extend functionality or develop new device protocols.

HR Management System



Any business software that helps to manage employee information and HR related tasks can be considered HR software. HR software systems assist with managing people, automating manual tasks, and keeping information orderly.

Software naturally saves labour time for managers and HR staff through automation, but it also assists with HR processes that allow for better planning, budget management, and decision making.

HR software includes:-

- **Human Resources Information Systems (HRIS)**
- **Human Resources Management Systems (HRMS)**
- **Human Capital Management (HCM)**
- **Applicant Tracking Systems.**

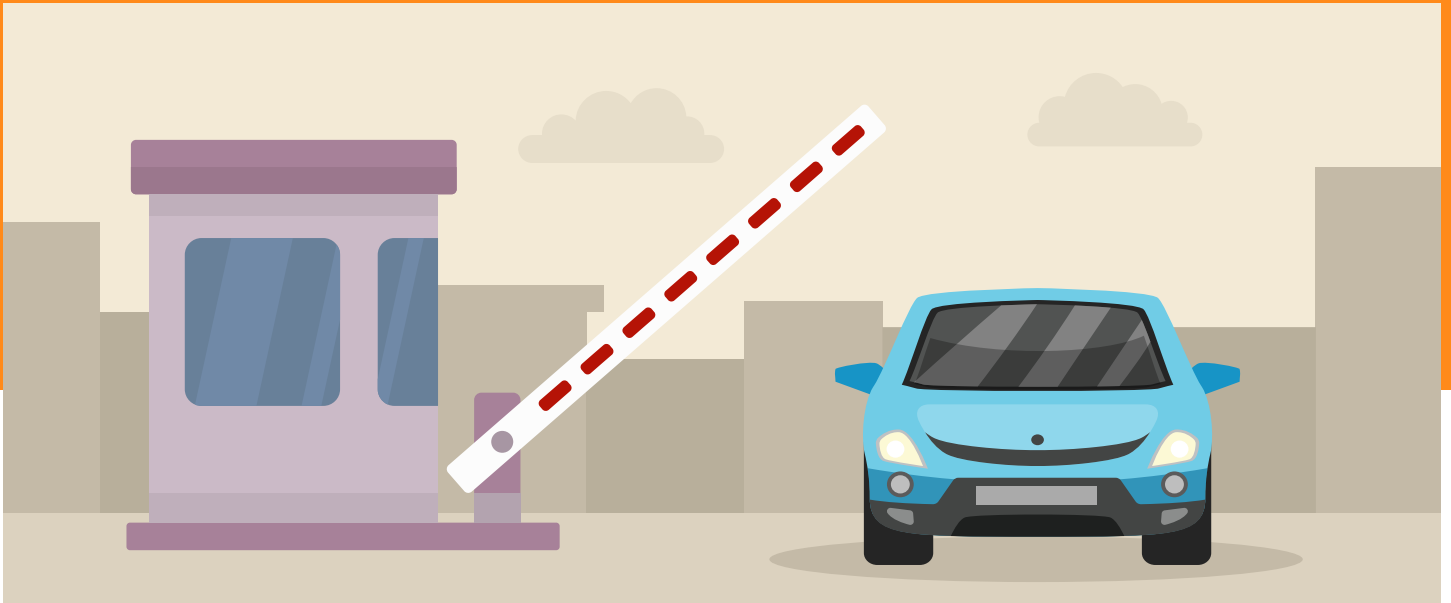
Payroll Management System



From bringing efficiency to performance & decision-making capabilities to productivity Rudra Payroll Software brings a lot to you. The best part is that all this happens through a very user-friendly interface & you never need to create a robust infrastructure or implement a hi-fi technology. We have simplified the way your payroll should work.

Rudra Payroll Software is capable enough to provide employees' complete details on a single screen with few clicks which replaces the need of looking into manual records. Rudra Payroll Software is fully capable of managing all the systems like Human Resources, Payroll Management, Compliance Management, tracking relevant information related to employee's compensation & wages etc. effectively and efficiently.

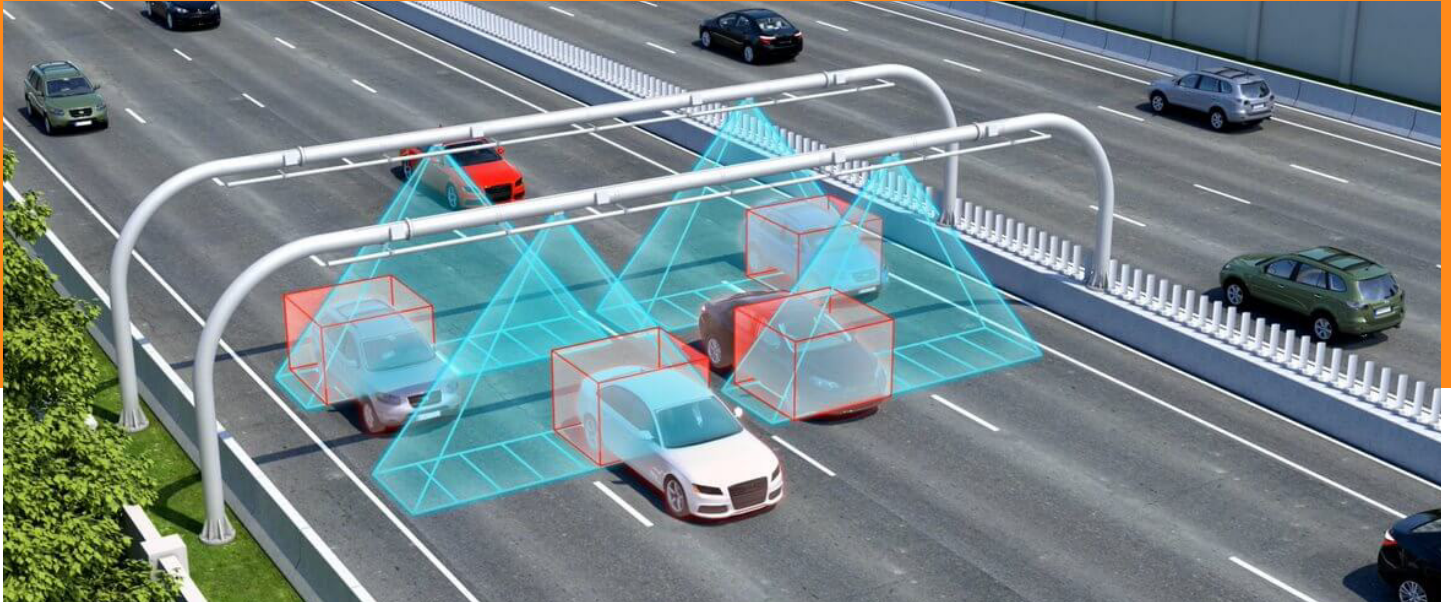
Automatic Boom Barrier



A boom barrier, also known as a boom gate, is a bar, or pole pivoted to allow the boom to block vehicular or pedestrian access through a controlled point. Typically the tip of a boom gate rises in a vertical arc to a near vertical position. Boom gates are often counterweighted, so the pole is easily tipped. Boom gates are often paired either end to end, or offset appropriately to block traffic in both directions. Some boom gates also have a second arm which hangs 300 to 400 mm below the upper arm when lowered, to increase approach visibility, and which hangs on links so it lies flat with the main boom as the barrier is raised. Some barriers also feature a pivot roughly half way, whereas the barrier is raised, the outermost half remains horizontal, with the barrier resembling an upside-down L when raised.

- **Cabinet can be customized**
- **Round arm 3 meter**
- **AC/DC/Servo based motor is stronger and maintenance-free, with electromagnet brake**
- **Reversing on obstacle**
- **Support infrared photocell and loop detector for security (optional)**
- **Connect with the computer by RS232**
- **User-friendly for power off**
- **Swing-away flange in the case of a collision with a vehicle, the barrier arm is released and can be manually re-engaged afterwards.**

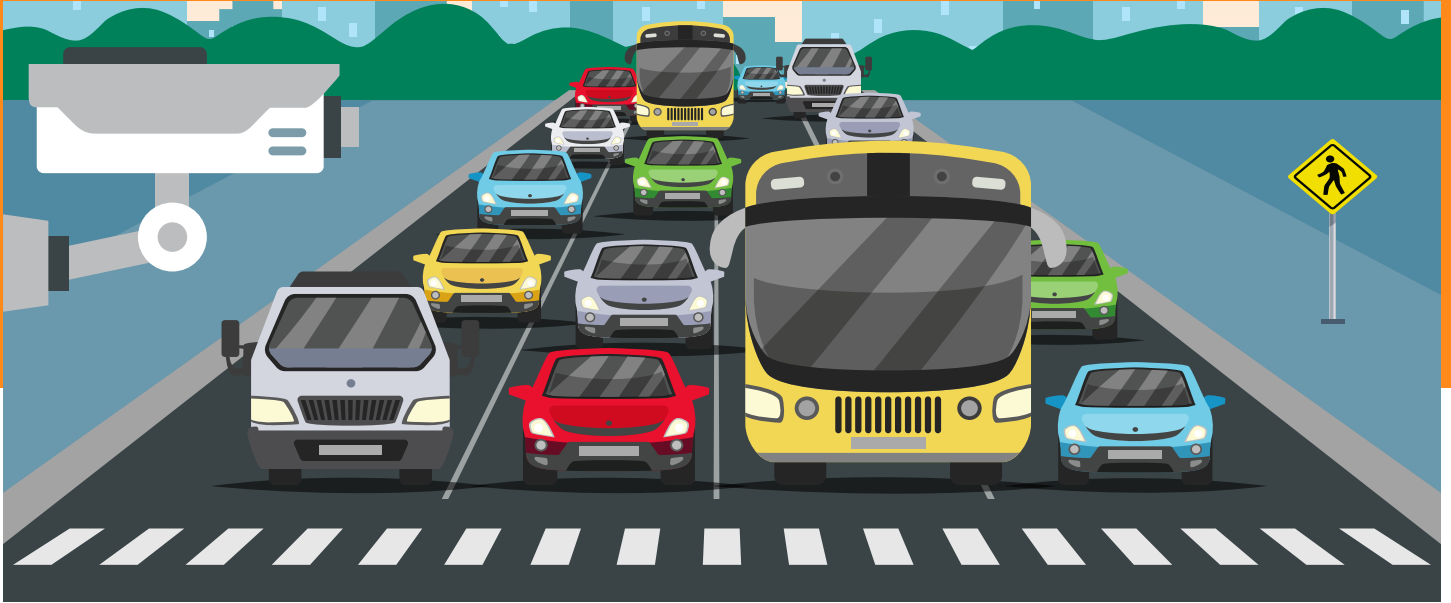
RFID Reader



Rudra Techno Care specializes in delivering modern RFID solutions for vehicle tracking, asset tracking, inventory tracking, and other valuable objects tracking in a cost-effective, secure manner. With rich experience and industry-leading partners, we constantly add innovation to our services to provide you with an unmatched combination of a complete suite of RFID products and services.

- **Real-time Data Tracking & Collection**
- **Multiple Applications Across Industries**
- **Wireless Connectivity**
- **Maximize Productivity & Management**
- **High Accuracy**
- **Robust & Resistant to Harsh Environment**
- **Reduce Manual Intervention**
- **Automates Processes**

CCTV Camera



Rudra Techno Care is a top security solutions provider delivering quality and customized services to corporate, industrial, and residential clients. We offer a wide range of advanced security surveillance solutions suitable for all indoor, outdoor, and perimeter areas protection.

- **Indoor & Outdoor Video Surveillance Systems**
- **Storage Optimization**
- **Identify Threatening Events**
- **Advanced Video Management**
- **Secured Centralized Server**
- **Facial Recognition Technology**
- **Easy to Manage Camera Movement**
- **HD Video Display Setup**

Solar LED



Rudra Solar LED lights are multi-purpose in terms of their application and can be used to power pathways, roads, streets, parking lots, and more. In areas where grid power is inaccessible, the cost of providing solar-powered Lights is economically viable. The Rudra Solar LED lights can withstand all kinds of weather conditions and are durable.

- **Energy Efficient Technology**
- **Weather Proof System**
- **Maintains Uniformity in Lighting**
- **Automated Start & End Feature**
- **Low on Maintenance**
- **Durable & Long-lasting**

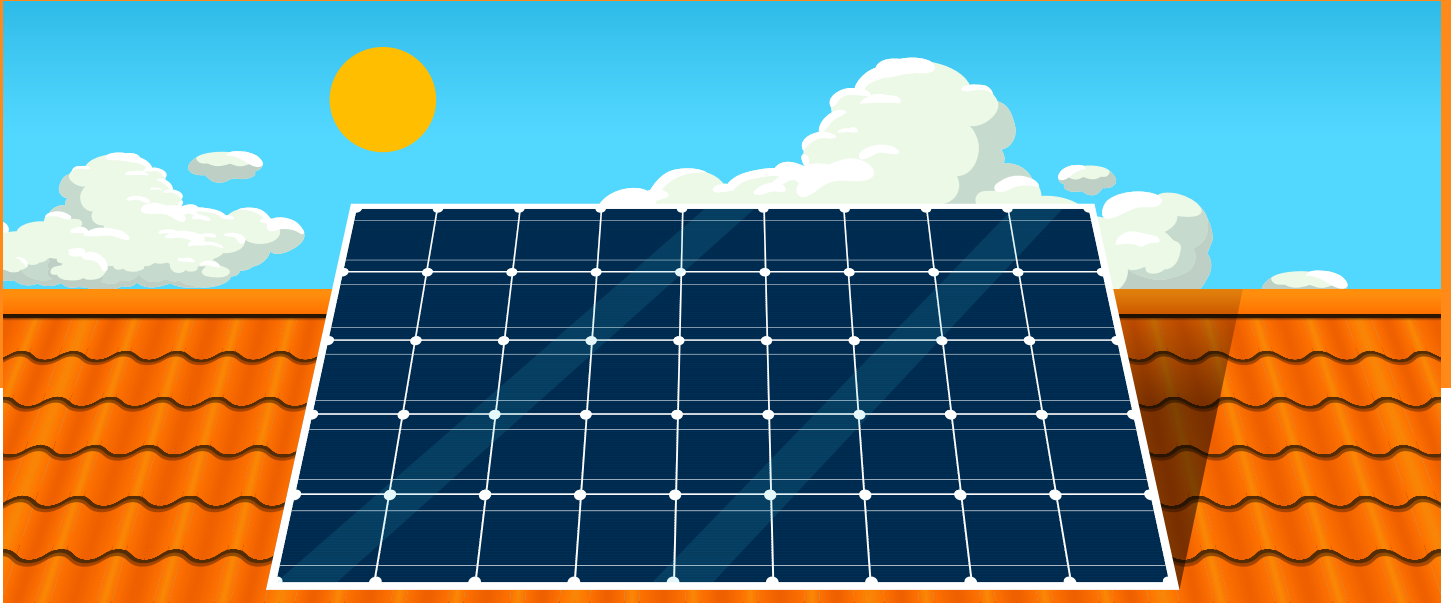
Solar Blinkers



To prevent rampant accidents and the resulting casualties, Rudra provides safety equipment that runs uninterruptedly on solar energy sources. Solar blinkers by Rudra are sustainable, run autonomously, and boasts of versatile applications, all while being economically viable.

- **High Quality with Weather-proof Body**
- **Available in Red, Green & Yellow Colours**
- **Minimum Power Consumption**
- **Long Visibility**
- **No Cabling or Road Trenching Required**
- **Easy Installation**
- **Even Distribution of Lights**
- **Tested for Quality & Reliability**

Solar Rooftop



With minimal maintenance and a good return on investment, Rudra solar rooftops come with multiple applications in the industrial sector. By revolutionizing the way our solar rooftops generate power for your industrial projects, we are reducing your dependence on resources that could potentially harm the environment. Our design has been made by prioritizing safety and efficiency at the core of the product, hence, making it a high-performing product.

- **Thorough Onsite Survey**
- **System Design & Engineering**
- **Project Installation & Commissioning**
- **Multiple Applications of Solar Power**
- **Operation & Maintenance**
- **Reduction in Electricity Bills**
- **Low Maintenance Cost**
- **Reduces Carbon Footprints**

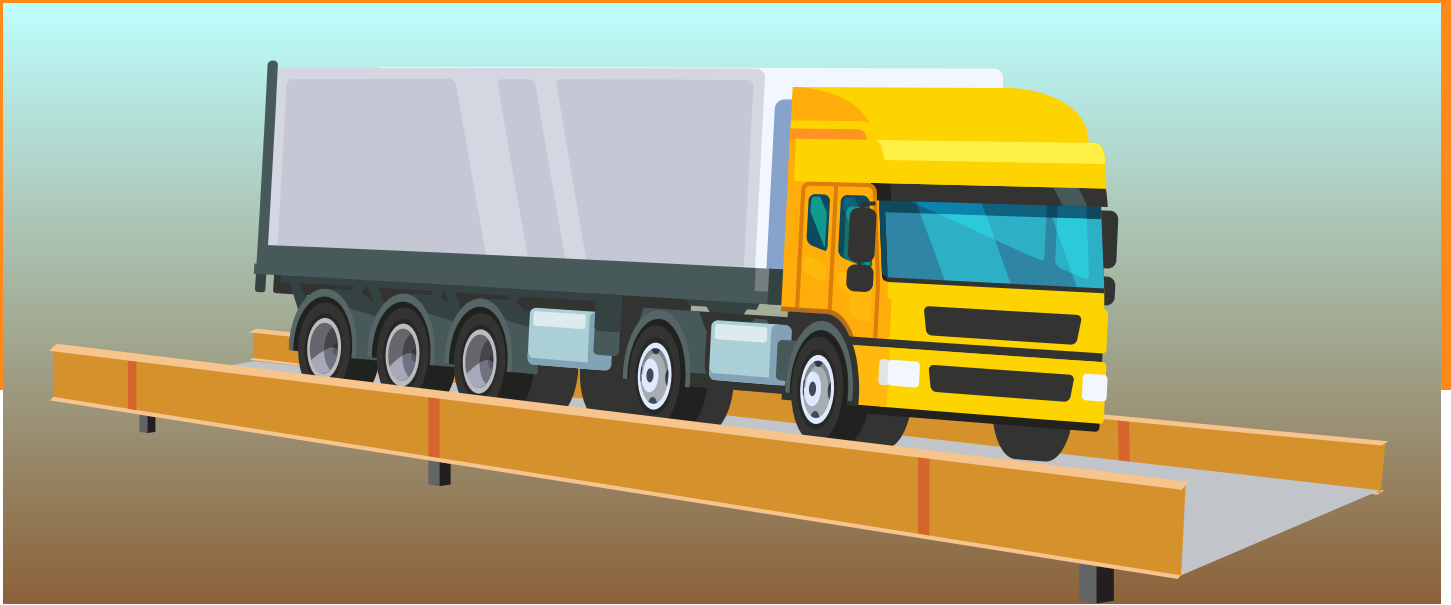
Solar Road Studs



Rudra Solar Road Studs increase visibility especially during adverse weather conditions such as heavy rain or places with poor sunlight. Our Solar Road Studs have high brightness as compared to an ordinary reflective road stud thereby, reducing and preventing potential mishaps.

- **Durable & Long-lasting**
- **Zero Maintenance**
- **Available in Multi-Colour Lighting**
- **Solar Rechargeable Batteries**
- **High Visibility of up to 500 meters**
- **Ideal for Highways, Parking Lots, Roads**

Toll Weighing Systems



Toll Weigh-In-Motion Systems Robust, Reliable and Proven Technology Solutions for high-speed and low-speed weighing, overload detection, toll roads, mines, sea ports, and bridge protection Robust, Reliable and Proven Technology Solutions for high-speed and low-speed weighing, overload detection, toll roads, mines, sea ports, and bridge protection.

- **Medium speed weigh in motion**
- **Weighing Bridges**
- **Weigh in motion**

Manufactured and supplied by -



Our Clients



Completed Toll Management Projects

| Sr. No. | Project Name | State | Client Name | Total Lanes |
|---------|--|----------------|---------------------------------|-------------|
| 1 | MPRDC Section 1 (72.00 K.M.) Hosangabad to Piparia Road | Madhya Pradesh | Chetak Enterprises Limited | 4 |
| 2 | MPRDC Section 1 (72.00 K.M.) Piparia to Hosangabad Road | Madhya Pradesh | Chetak Enterprises Limited | 4 |
| 3 | MPRDC Section 1 (72.00 K.M.) Piparia to Hosangabad Road | Madhya Pradesh | Chetak Enterprises Limited | 2 |
| 4 | PSP-2006/CR-96/Road-9 K.M. 85/100 Ahmednagar to Shirur Supa | Maharashtra | Chetak Enterprises Limited | 10 |
| 5 | SH-64 & SH-16 Rohat to Ahore, Rohat | Rajasthan | Chetak – Mitra Tollways | 2 |
| 6 | SH-64 & SH-16 Ajitpura | Rajasthan | Chetak – Mitra Tollways | 2 |
| 7 | SH-64 & SH-16 Rohat to Jalore, Jalore | Rajasthan | Chetak – Mitra Tollways | 4 |
| 8 | SH- 20 AT K.M. 44 Firozpur Road | Punjab | Chetak Enterprises Ltd. | 4 |
| 9 | SH- 20 AT K.M. 77 Fazilika Road | Punjab | Chetak Enterprises Ltd. | 4 |
| 10 | SH- 90 AT KM 26/832 Jaipur Jobner Road Bassi Nagan Toll Plaza | Rajasthan | RSRDC/Vinayak Agro | 6 |
| 11 | SH- 90 AT KM 26/832 Jobner Kuchaman Road Nava Toll Plaza | Rajasthan | RSRDC/Vinayak Agro | 4 |
| 12 | SH-90 AT KM 127/650 Kuchaman Road Budsu Toll Plaza | Rajasthan | RSRDC/Vinayak Agro | 4 |
| 13 | SH-90 AT KM 181/500 Kuchaman Nagaur Road Uchaida Toll Plaza | Rajasthan | RSRDC/Vinayak Agro | 4 |
| 14 | SH-27 AT KM 47.00 Sidhrath Toll Plaza , Sirohi | Rajasthan | Shiv Puja Construction Pvt. Ltd | 6 |
| 15 | SH-27 AT KM 47.00 Karoti Toll Plaza | Rajasthan | Shiv Puja Construction Pvt. Ltd | 6 |
| 16 | SH-27 AT KM 71.4 Mandhar Toll Plaza | Rajasthan | Shiv Puja Construction Pvt. Ltd | 6 |
| 17 | PSP-2006/CR-181 (Part 3)/Road-9A Kopra Toll Plaza | Maharashtra | GCL Ghai Construction Ltd. | 6 |
| 18 | PSP-2006/CR-181 (Part 3)/Road-9A Kamote Toll Plaza | Maharashtra | GCL Ghai Construction Ltd. | 6 |
| 19 | Chirawa Sinhhana Up To Haryana Border Chirawa Toll Plaza | Rajasthan | SPC Chetak Tollways Ltd | 4 |
| 20 | Chirawa Sinhhana Up To Haryana Border Pachari Toll Plaza | Rajasthan | SPC Chetak Tollways Ltd | 4 |

Completed Toll Management Projects

| Sr. No. | Project Name | State | Client Name | Total Lanes |
|---------|---|-----------------------|----------------------------|------------------|
| 21 | Tathed 15/700 Toll Plaza On Kota to Jharel Via Itawa Ganeshganj Road | Rajasthan | Chetak Jainco Tollways Ltd | 2 |
| 22 | Barod 54/300 Toll Plaza On Kota to Jharel Via Itawa Ganeshganj Road | Rajasthan | Chetak Jainco Tollways Ltd | 2 |
| 23 | Kalyan Toll Plaza Patiala-Nabha-Malerkotla Road (00.0 Km to 13.00 Km) | Punjab | PWD Punjab | 4 |
| 24 | Mohrana Toll Plaza Patiala-Nabha-Malerkotla Road (13.00 Km to 47.00 Km) | Punjab | PWD Punjab | 4 |
| 25 | Malodi Toll Plaza Vasai Bhiwandi (0/0 Km to 26/425) | Maharashtra | Supreme Infra India Ltd | 6 |
| 26 | Kotkapura Muktsar Tollways Pvt. Ltd. | Punjab | Supreme Infra India Ltd. | 6 |
| -> | TOTAL States, Clients & Lanes: | -> 4 States | -> 9 Clients | 116 Lanes |

Completed Check Post Projects

| Sr. No. | Project Name | State | Client Name | Total Lanes |
|---------|----------------------|---------------------------|-------------|-------------|
| 1 | Akkalkuwa Check Post | Maharashtra/ Gujarat | MBCPNL | 4 |
| 2 | Shinoli Check Post | Maharashtra/ Karnataka | MBCPNL | 4 |

PLEASE REFER <http://rudratechnocare.com/PROJECTS> FOR MORE WEB AND ANDROID/IOS PROJECTS AND <http://rudratechnocare.com/clients> FOR CLIENTS DETAILS

Completed Hybrid Toll Management Projects

| Sr. No. | Project Name | State | Client Name | Total Lanes |
|---------|--|----------------|--|-------------|
| 1 | NH-79 K.M. 189.00 Chittorgarh to Nimbhera, Ochadi | Rajasthan | Chetak Tollways Limited | 12 |
| 2 | NH-79 K.M. 221.00 Nimbhera to Neemuch | Rajasthan | Chetak Tollways Limited | 10 |
| 3 | NH-79 K.M. 10.00 Nimbhera to Sagwadia | Rajasthan | Chetak Tollways Limited | 6 |
| 4 | NH-79 K.M. 70.00 Sagwadia to Pratapgarh | Rajasthan | Chetak Tollways Limited | 4 |
| 5 | PSP-2006/CR-96/Road-9 K.M. 85/100 Ahmednagar to Shirur Supa | Maharashtra | Chetak Enterprises Limited | 10 |
| 6 | Katol Road (State Highway No. 248) Near Octroi Naka | Maharashtra | GCL Ghai Construction Ltd. / JYS Infotech | 2 |
| 7 | Hingana Road (State Highway No. 255) Near. Engineering College | Maharashtra | GCL Ghai Construction Ltd. / JYS Infotech | 2 |
| 8 | Umred Road (State Highway No. 9) Near. Octroi Naka | Maharashtra | GCL Ghai Construction Ltd. / JYS Infotech | 2 |
| 9 | Ring Road b/w Hingana Amravati Rd Near. Wadi Junction | Maharashtra | GCL Ghai Construction Ltd. / JYS Infotech | 2 |
| 10 | Wadi - Katol Road at Km. 3/800 Near. Octroi Naka | Maharashtra | GCL Ghai Construction Ltd. / JYS Infotech | 2 |
| 11 | MPRDC (Km 1+200) Bhopal Bypass Road @11 Mile | Madhya Pradesh | DP Jain & Co. Infra Pvt. Ltd. | 8 |
| 12 | MPRDC (Km 42+00) Bhopal Bypass Road @ Mubarakpur | Madhya Pradesh | DP Jain & Co. Infra Pvt. Ltd. | 8 |
| 13 | Design Ch-7+400 to 20+925 =13.525 Km. & Design Ch-27+300 to 41+625=14.325 Km. | Rajasthan | Tomar Construction Co. | 6 |
| 14 | NH-33, Barhi-Baharagora National Highway - Jharkhand | Jharkhand | DevAditya Technocrats / Dilip Buildcon Ltd. | 16 |
| 15 | NH-60, Rampura Toll Plaza, Kharagpur Bypass, Rampura, West Bengal | West Bengal | DevAditya Technocrats / Dilip Buildcon Ltd. | 10 |
| 16 | NH-16 Chilkaluripet-Nellore, Ongole, Andhra Pradesh | Andhra Pradesh | DevAditya Technocrats / Dilip Buildcon Ltd. | 8 |
| 17 | NH-40 Bandapalli, Andhra Pradesh | Andhra Pradesh | DevAditya Technocrats / Dilip Buildcon Ltd. | 8 |
| 18 | Majalgaon to Kaij Section from Km 101/740 to Km 159/258 (Section-III) | Maharashtra | DevAditya Technocrats / Dilip Buildcon Ltd. | 8 |
| 19 | Nagpur-Kondhali section of NH-6 | Maharashtra | Atlanta Limited | 8 |

Completed Hybrid Toll Management Projects

| Sr. No. | Project Name | State | Client Name | Total Lanes |
|---------|---|-----------------------|-------------------------------|------------------|
| 20 | Bidar - Ekkali (KM 0.00 to 27.69 KM) | Karnataka | DP Jain & Co. Infra Pvt. Ltd. | 6 |
| 21 | Ekkali - Chincholi (KM 0.00 to 32.35 KM) | Karnataka | DP Jain & Co. Infra Pvt. Ltd. | 6 |
| 22 | Yadgir Bypass (Yadgir to Raichur) Road Project | Karnataka | DP Jain & Co. Infra Pvt. Ltd. | 8 |
| 23 | Lebad (SH-31) to Manpur (NH-3) Road Section | Madhya Pradesh | Valecha LM Toll Pvt. Ltd. | 8 |
| | Total States, Clients & Lanes: | -> 7 States | -> 6 Clients | 160 Lanes |





Rudra Techno Care

📍 G-303, Sg Business Hub, Near Gota Flyover, Gota, Sg Highway, Ahmedabad – 380060

☎ +918800255595 / +918827207096

✉ service@rudratechnocare.com | rudratechnocare@gmail.com

🌐 www.rudratechnocare.com